



LJUBLJANA,  
9th October  
2024

## *DIGIN* **CONFERENCE**

### **Introducing a Solution: The Self-Evaluation Tool in Practice**

**Isabel Leandro Garcia and Marta Mármol Muñoz**

This research was conducted within the activities of the Self-Evaluation Tools for e-Inclusion in HEI (SET4Inclusion) project (2022-1-SI01-KA220-HED000088368), co-funded by the Erasmus+ Programme of the European Union.

# Introducing a Solution: The Self-Evaluation Tool in Practice

## Self-evaluation for HEI teachers

**SET 4 INCLUSION**

University

Field

Email

Occupation  
 Teacher  Manager

Country

**Start**

**Self-evaluation for HEI teachers**

It's a project designed for universities to promote and facilitate the inclusion of people with different abilities or special needs. In particular, digital education can have a positive impact on students and their educational success.

01

INTRODUCTION

02

HOW DOES IT WORKS

03

BENEFITS OF THE  
TOOL

04

CONCLUSION

# The Article: Introducing a Solution: The Self-Evaluation Tool in Practice

The **article focuses on the introduction of the Self-evaluation Tool** developed under the **Erasmus+ project “SET4Inclusion”**. The SET4Inclusion project is a European collaborative initiative designed to tackle these challenges by developing and implementing a Self-evaluation Tool tailored for HEIs.

<https://set4inclusion.eu/self-evaluation-tools/>

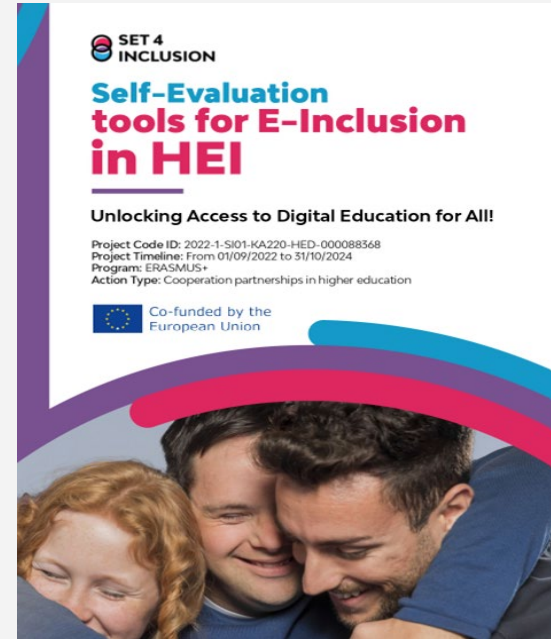


# Framework

The **theoretical framework of inclusive digital education** including all 3 elements:

- technology,
- pedagogy content, and
- management aspects,

considering **different e-learning settings** and modes is the base foundation to develop a Self-Evaluation Tool for HEI on inclusive digital education in HEI



# Self Evaluation Tool

**Self-Evaluation Tool** has to be used as a **practical guide for the management** to define the good and not-so-good things about digital education and communication about inclusion.

**Self-Evaluation Tool for HEI** teachers on inclusive digital teaching practice is used as a **practical guide for the teachers** to define the good and not-so-good things about their digital teaching practice concerning inclusion. (Bennett, 2021)

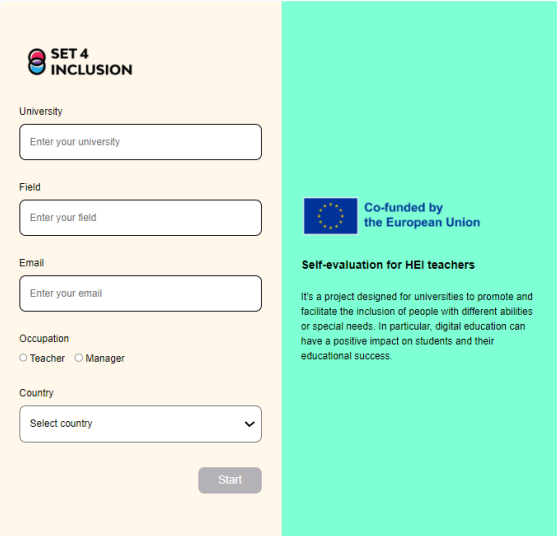


# A guide

**Self-Evaluation Tool** is a practical guide for **HEI management** to help them assess the capabilities of the HEI regarding **inclusive digital education**. It consists of many questions, representing influence factors, described through specific indicators.

This self-evaluation tool is also a practical guide for **HEI teachers** to help them assess the **capabilities** of their teaching practice about inclusive digital education. It consists of many questions, representing influence factors, described through specific indicators.

Self-evaluation for HEI teachers



**SET 4 INCLUSION**

University  
Enter your university

Field  
Enter your field

Email  
Enter your email

Occupation  
 Teacher  Manager

Country  
Select country

Start

**Co-funded by the European Union**

**Self-evaluation for HEI teachers**

It's a project designed for universities to promote and facilitate the inclusion of people with different abilities or special needs. In particular, digital education can have a positive impact on students and their educational success.

The **responses and subsequent questions are categorized into different variables**, which will be used to determine the final results of the report.

# The tool

## Questions

Twelve questions regarding **Leadership/School's perspective**. These questions are designed to evaluate the support provided to teachers in digital literacy for inclusive digital education.

The section called **Tools and Technology** aims to investigate technology itself. **Continuing Professional Development** section contains five management-related questions that support us in acquiring the knowledge and pedagogical skills necessary for inclusive education.

From the **Teacher's perspective**, the **Pedagogy, Supports, and Resources** section contains 7 questions about how it is developed to provide inclusive digital resources to support their inclusive teaching.

The **student's perspective** covers thirteen questions that are related to the proper **use of the technology** as an inclusion tool.

**Pedagogy, Implementation in the classroom**, consists of seven questions that cover **Digital technologies in the classroom** to facilitate the organization of teaching groups in which students can collaborate by valuing the diversity of each one.

<https://set4inclusion.eu/self-evaluation-tools/>

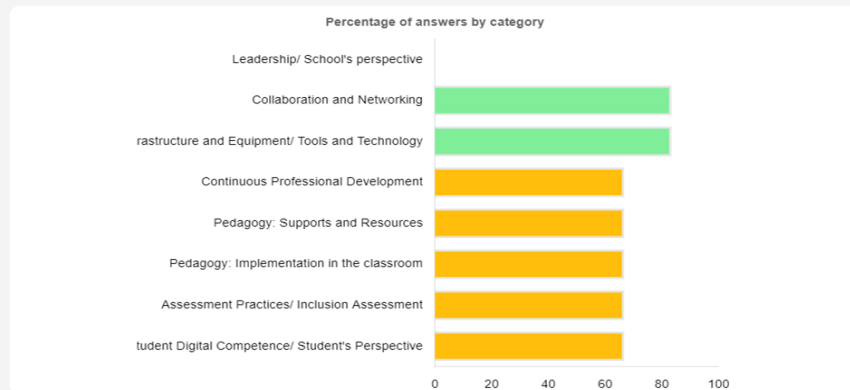
# The tool

## Results

The **E-platform** where the tool is located, automatically **creates a smart report for the users** of Self-EvaThe tool offers the **results** with a percentage of answers by categories.

The **pilot study** of the **Self-Evaluation Tool** developed under the **SET4Inclusion project** has yielded significant insights into the tool itself, and its effectiveness for the development of Digital Inclusion in HEIs.

### Results of the survey



You can find the tool in multiple languages.  
Tools with **links to recommended** e-learning content according to the result of the self-evaluation.



# BENEFITS



## PRIORITY

These tools are essential to make the issue of inclusion of all **students** in digital education on the priority agenda of HEI.



## FOCUS

Providing focused, easily **accessible learning** content that could be used to support inclusive practices within the institutions.



## ACHIEVEMENT

Increased accountability by regularly evaluating themselves, HEIs take ownership of their development and are more likely to stay committed to their goals to achieve Digital Inclusive Education.



## EVALUATION

Participants used these tools to evaluate and reflect on the e-inclusion processes in their institutions.



## CHALLENGES

Teachers, and Managers from HEIs can tailor their growth plans to their unique strengths and challenges for Inclusive Digital Education.



## INTEGRATION

Integration with Performance Reviews of the tool can be integrated into existing performance review processes by the HEIs.

# Conclusion

Self-Evaluation Tool is a **powerful solution** for those seeking to **improve** their performance and grow in their careers.

- Provide a structured way to reflect,
- set goals,
- Track progress
- Empowers individuals to take charge of their development.
- Contributes to the overall success of the organization.





# THANKS!

DO YOU HAVE ANY  
QUESTIONS?

<https://set4inclusion.eu/contacts/>

## Funding Information

**Project Title:** Self-Evaluation Tools for e-Inclusion in HEI

**Project Acronym:** SET4Inclusion

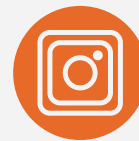
**Project Timeline:** From 1/9/2022 to 31/10/2024

**Program:** ERASMUS+

**Action Type:** Cooperation partnerships in higher education

**Call:** March 2022, Round 1

**Project Code ID:** 2022-1-SI01-KA220-HED-000088368



## Partners: Set4inclusion Erasmus+ Project



This research was conducted within the activities of the Self-Evaluation Tools for e-Inclusion in HEI (SET4Inclusion) project (2022-1-SI01-KA220-HED000088368), co-funded by the Erasmus+ Programme of the European Union.

**CREDITS:** This presentation template was created by Slidesgo, and includes icons by Flaticon, and infographics & images by Freepik

